

# EasyWave Install Guide

EasyWave is a software application that helps users create, edit, and download arbitrary waveforms for use with the SIGLENG SDG series of Arbitrary Waveform Generators. Before using **EasyWave**, you need to know the configuration requirements and installation procedures of the software.

## System Requirements

Before using **EasyWave** Software, ensure that your computer meets the following configuration requirements.

### Hardware Configuration Requirements

- Internal memory: 1 GB or higher
- Monitor: 1024x800 or higher resolution
- Processor: 1 GHz or higher
- Hard disk: 100 MB or higher
- USB or LAN interface and cable

### Running Environment

- Operating System: Windows XP, Windows 7, Windows 8, Windows 10
- National Instruments NI-VISA Library: Version 5.4 or higher

### NI-VISA

Before using **EasyWave**, please make sure that you have properly installed the latest version of National Instruments NI-VISA Software.

NI-VISA is a communication library that enables computer communications to instrumentation. There are two available VISA packages: A full version and the Run-Time Engine. The full version includes NI device drivers and a tool named

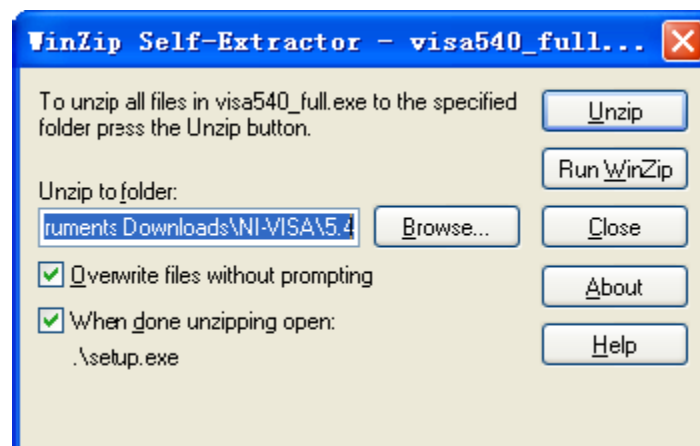
NI MAX; a user interface to control the device. While the drivers and NI MAX can be useful, they are not required for EasyWave. The Run-Time Engine is a much smaller file and is recommended for use with EasyWave.

For convenience, you can get the NI-VISA 5.4 full version from:

<http://www.ni.com/download/ni-visa-5.4/4230/en/>. You can also download [NI-VISA Run-Time Engine 5.4](#) to your PC and install it as default selection. Its installation process is similar with the full version.

Follow these steps to install NI-VISA (The full version of NI-VISA 5.4 is used in this example):

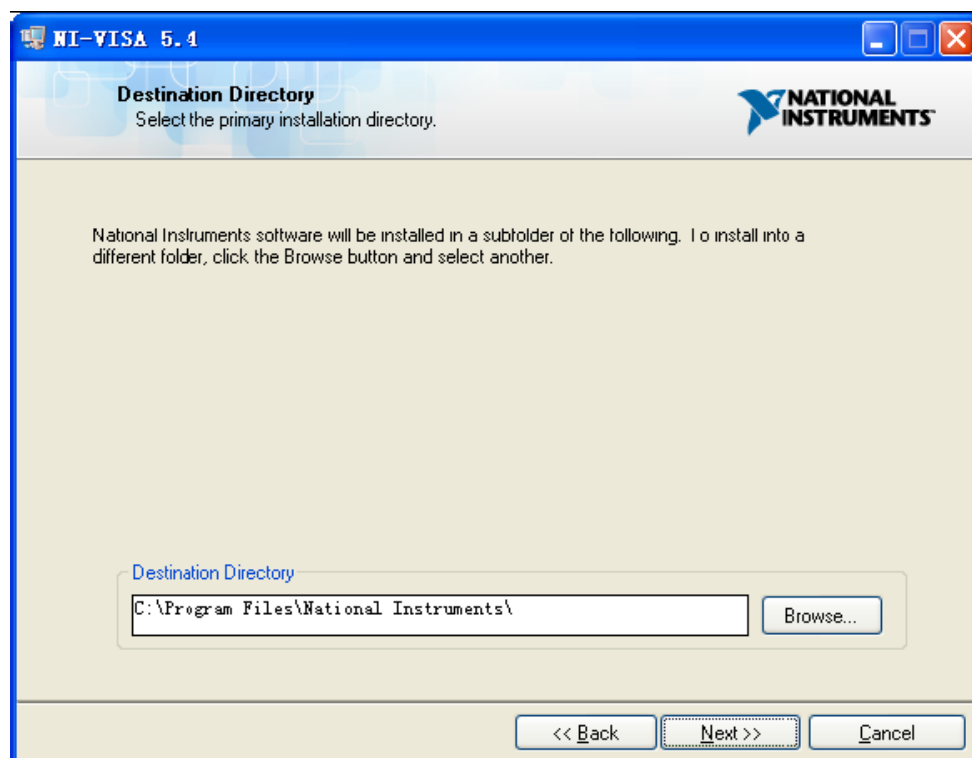
- a. Download the appropriate version of NI-VISA (Run-time engine is recommended)
- b. Double click the visa540\_full.exe, dialog shown as below:



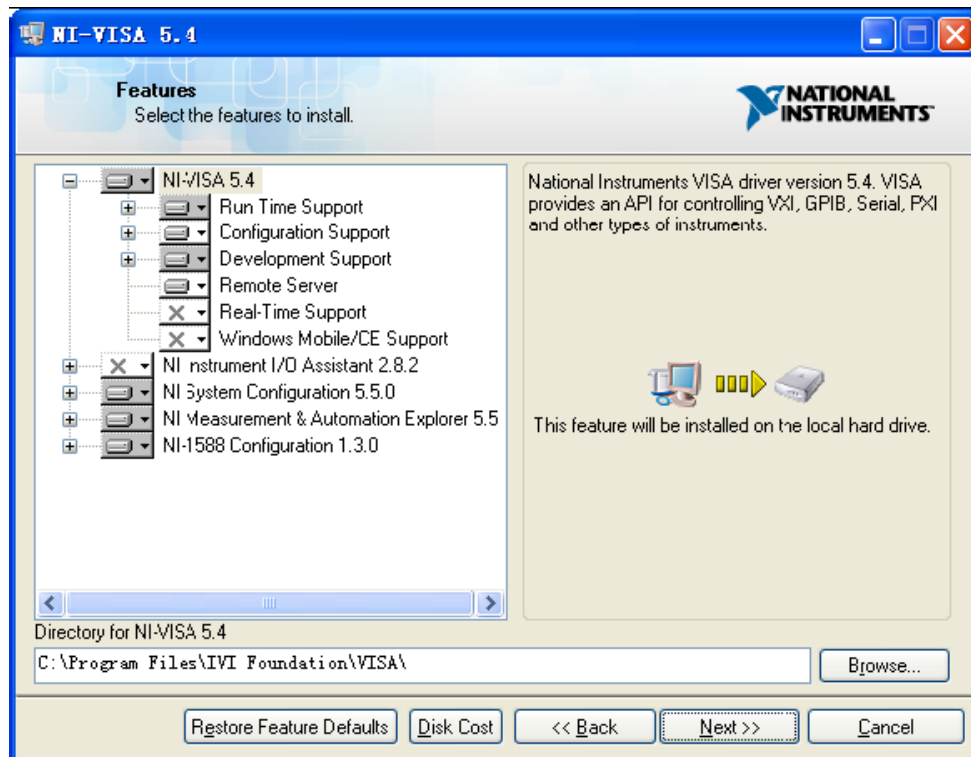
- c. Click Unzip, the install process will launch after unzipping files. If your computer needs to install the .NET Framework 4, it may auto start.



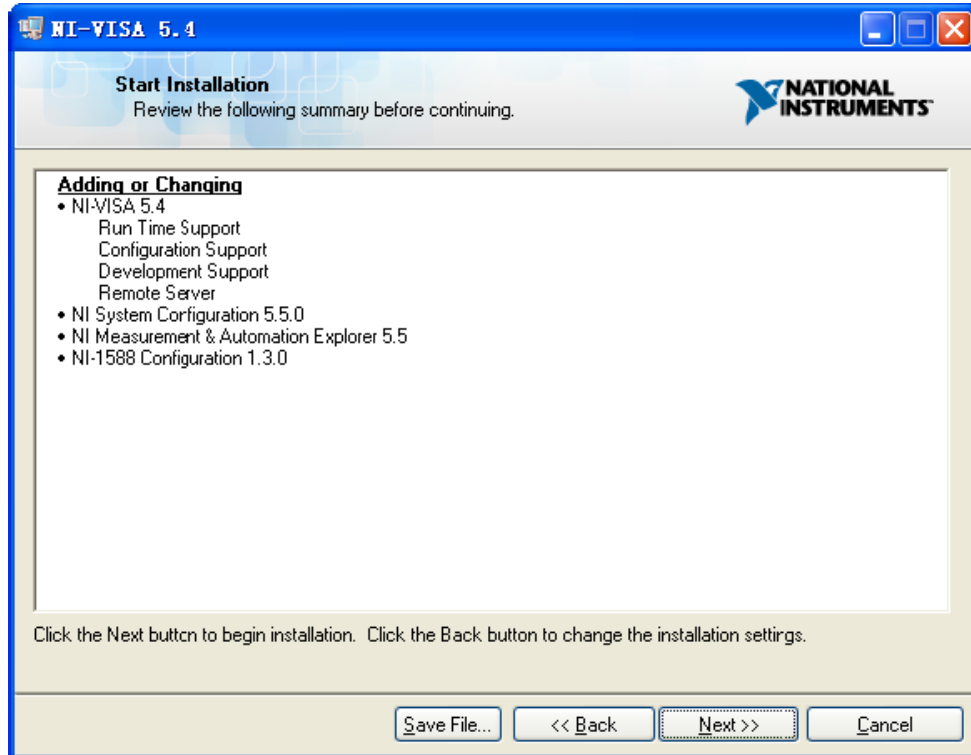
- d. The NI-VISA install dialog is shown above. Click Next to start the installation process.



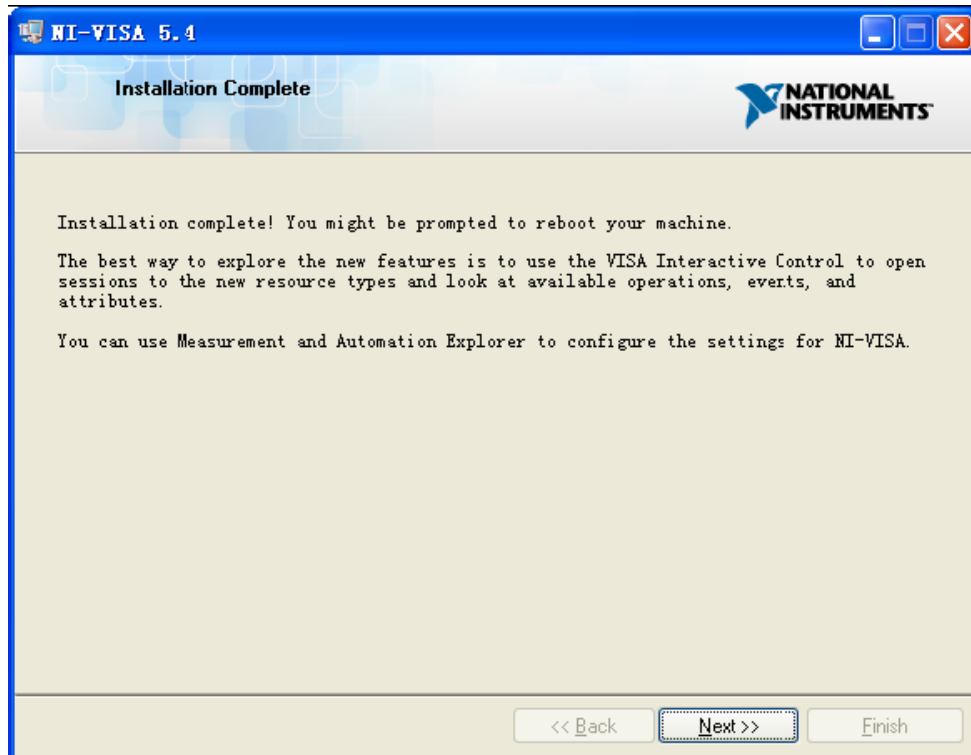
- e. Set the install path, default path is “C:\Program Files\National Instruments\”, you can change it, if you prefer. Click Next, dialog as shown above.



- f. Click Next twice, in the License Agreement dialog, select the “I accept the above 2 License Agreement(s).”, and click Next, dialog as shown below:



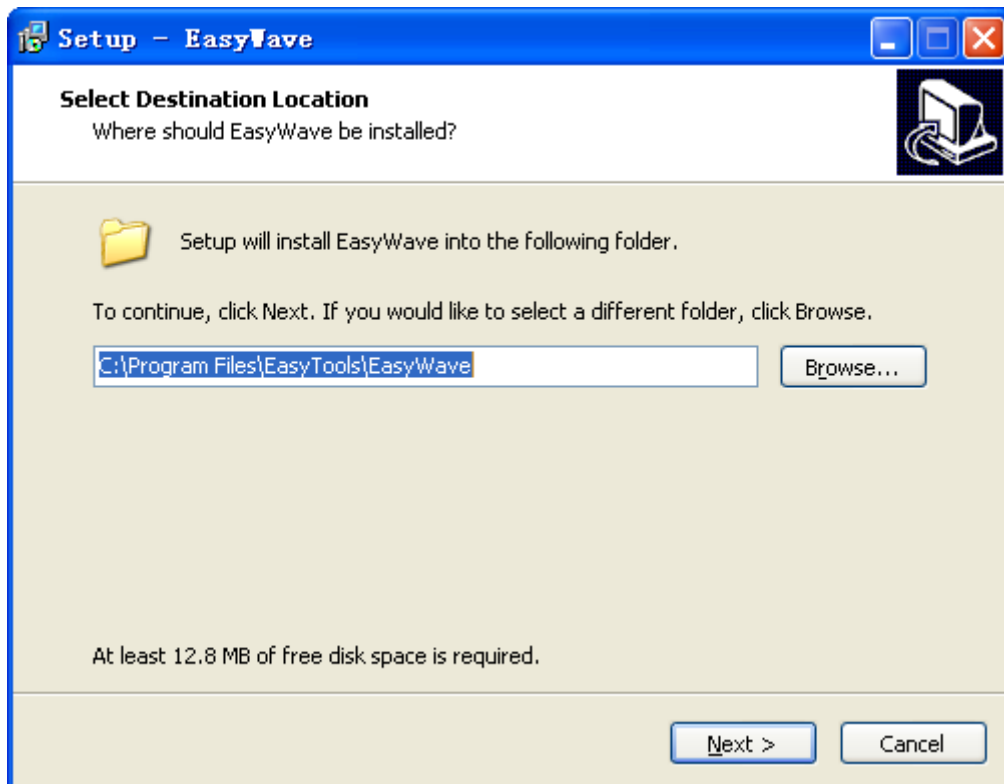
g. Click Next to begin installation.



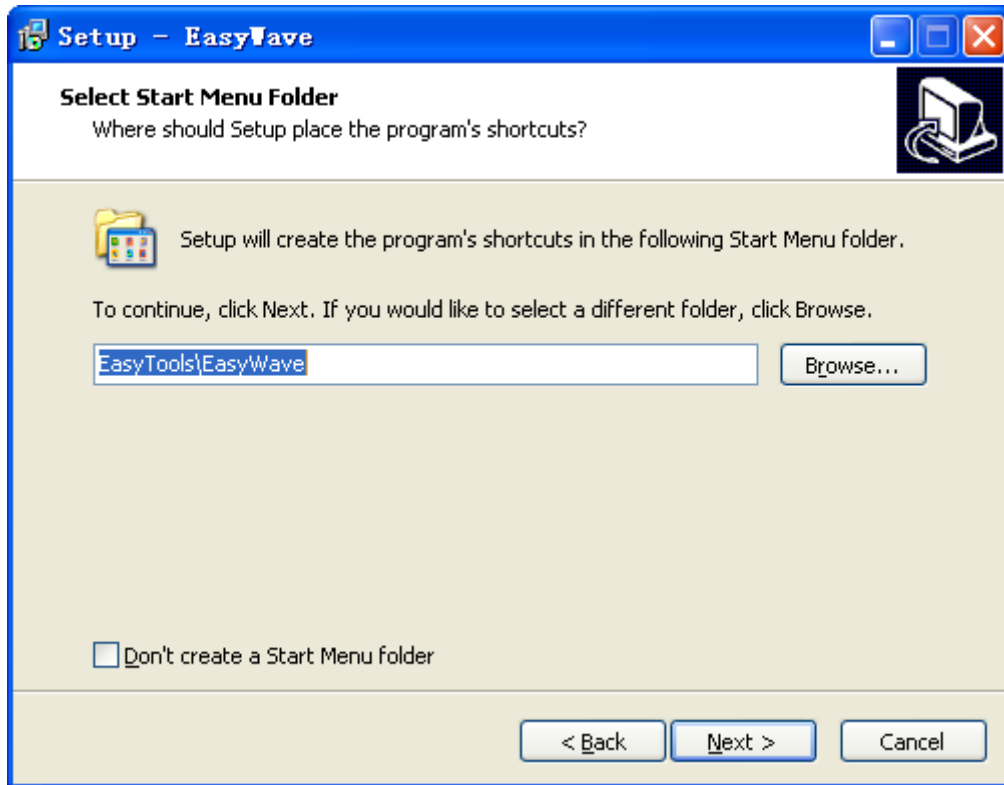
h. Now the installation is complete, reboot your PC.

## EasyWave Installation

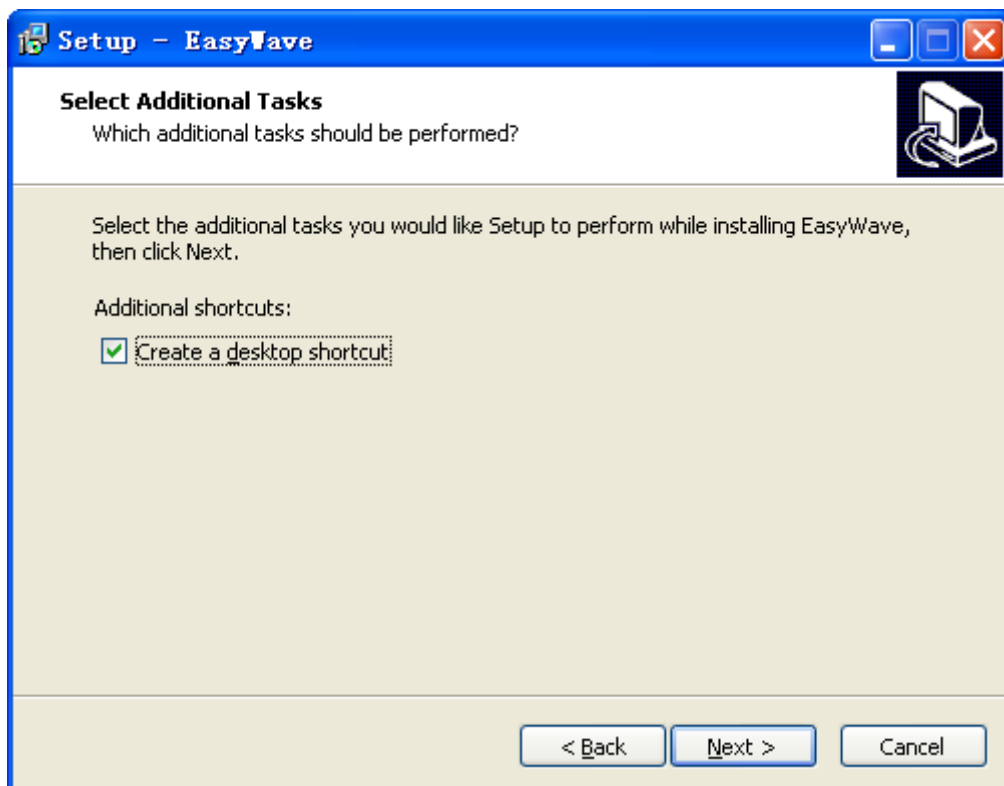
- a. Download the latest EasyWave software. It is available on the product page for the appropriate Waveform Generators on the SIGLENT website ([www.siglent.com](http://www.siglent.com))
- b. Run the file "EasyWave\_setup.exe", the dialog shown as below.



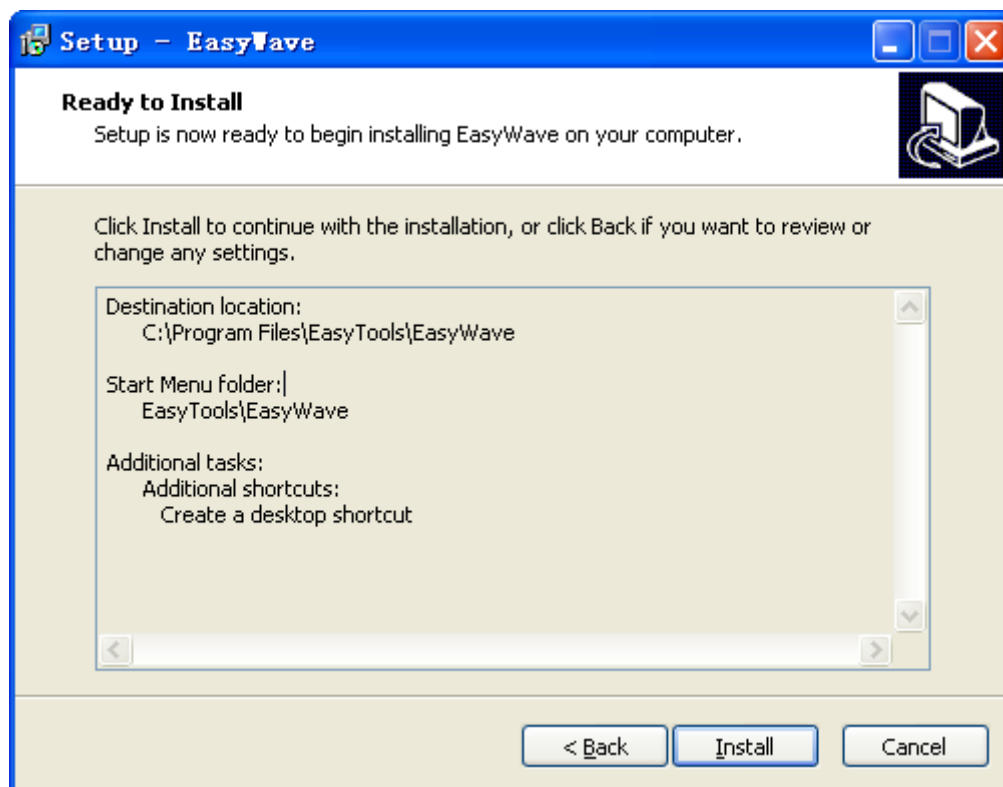
- c. Select an installation folder, click Next, the dialog as shown below.



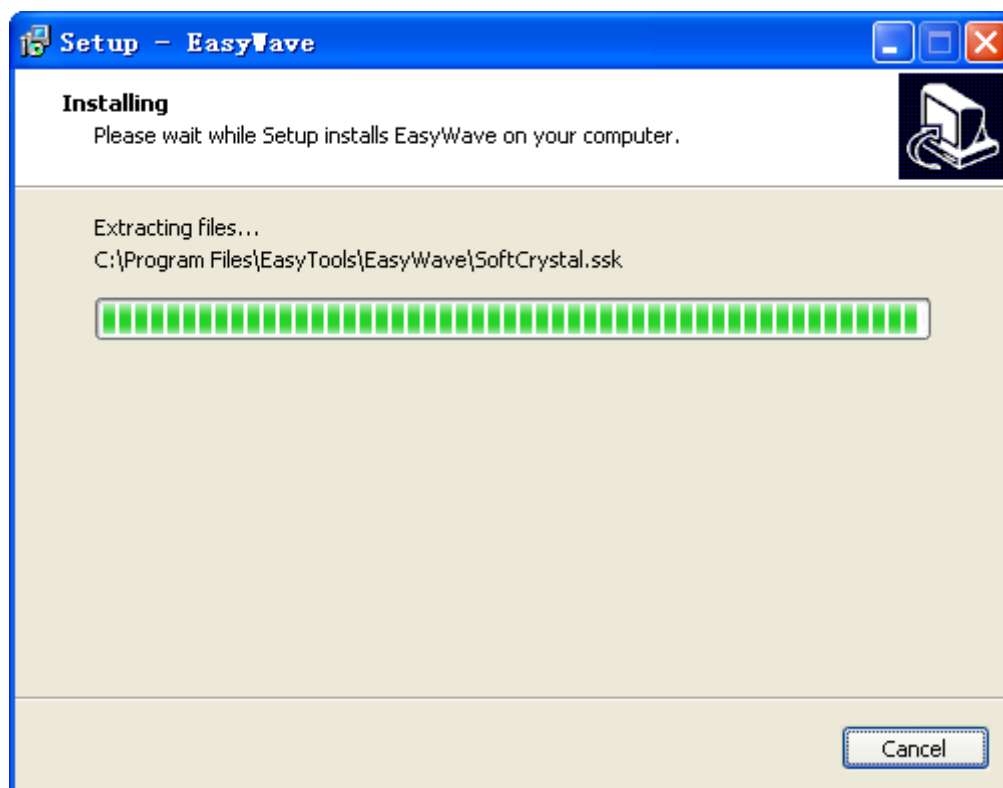
- d. Select a Start Menu folder, click Next in the dialog box as shown below.



- e. Click Next.



- f. Click Install.



- g. Installation complete. Click Finish to launch EasyWave

